

Support Budgets

Wellbeing Impact Assessment Report

This report summarises the likely impact of a proposal on the social, economic, environmental and cultural well-being of Denbighshire, Wales and the world.

Assessment Number:	397
Brief description:	Support Budgets is the proposed phrase to describe the types of funding that will be made available to individuals who are eligible for a managed care and support plan within Denbighshire. Community Support Services (CSS) have been on a journey for several years to develop all areas of practice in line with the Social Services and Well-Being (Wales) Act 2014. The Service is now changing the processes and the approach to the allocation of money to individuals predominantly to increase the choice, voice and control of the people they support.
Date Completed:	12/04/2018 13:30:35 Version: 3
Completed by:	Cathy Curtis-Nelson
Responsible Service:	Community Support Services
Localities affected by the proposal:	Whole County,

IMPACT ASSESSMENT SUMMARY AND CONCLUSION

Before we look in detail at the contribution and impact of the proposal, it is important to consider how the proposal is applying the sustainable development principle. This means that we must act "in a manner which seeks to ensure that the needs of the present are met without compromising the ability of future generations to meet their own needs."

Score for the sustainability of the approach

Could some small changes in your thinking produce a better result?

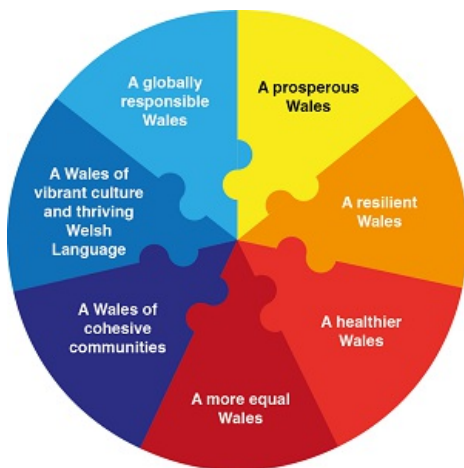


(3 out of 4 stars)

Actual score : 17 / 24.

Summary of impact

Wellbeing Goals



A prosperous Denbighshire	Positive
A resilient Denbighshire	Positive
A healthier Denbighshire	Positive
A more equal Denbighshire	Positive
A Denbighshire of cohesive communities	Positive
A Denbighshire of vibrant culture and thriving Welsh language	Positive
A globally responsible Denbighshire	Negative

Main conclusions

This exercise, although generally a positive development, has emphasised the need for more in depth work with independent sector care providers to ensure they understand and can maximise the opportunities of this development and with health colleagues who will need to understand the new ways of working, particularly as we start to work together in Community Resource Teams. It has also highlighted the need to promote the positive nature of this development in relation to the Welsh Language....not only for individual Welsh speakers who could employ people within their local Welsh speaking communities but also for the potential to develop a Welsh speaking brokerage service and work with Higher Education before students stop speaking the language.

THE LIKELY IMPACT ON DENBIGHSHIRE, WALES AND THE WORLD

A prosperous Denbighshire

Overall Impact	Positive
Justification for impact	Although small scale, people will have the opportunity to employ people in their local communities flexibly in order to help meet their well-being outcomes

Positive consequences identified:

Support Budget recipients can employ local people as personal assistants. Brokerage opportunities will be developed

Support Budgets can be spent on anything legal that will meet the outcomes of an individual. This includes employing people in rural communities

Support Budget recipients can purchase specialist support to enable them to have the skills to become employers

Unintended negative consequences identified:

Mitigating actions:

Specialist support will be made available (provided or contracted for) e.g. specialist HR advice; pay roll provision; managed account service

A resilient Denbighshire

Overall Impact	Positive
Justification for impact	If people are travelling less because of employing people in their own community there should be less fuel consumption

Positive consequences identified:

Less travel via cars if local people provide care when needed

Unintended negative consequences identified:

Mitigating actions:

A healthier Denbighshire

Overall Impact	Positive
Justification for impact	The ethos of the provision of support budgets is to maximise choice voice and control

Positive consequences identified:

Support Budgets are part of a continuum of care and support, whereby earlier in the pathway SPOA and Community Navigators and Talking Points exist to encourage the 5 ways to well-being. This has to be considered before a Support Budget is allocated

Support Budgets can be used to purchase support to access leisure opportunities instead e.g. traditional day care

Working with people and communities to build independence and resilience is at the heart of this development. The concentration on commissioning care and support for outcomes should ensure people are happy, independent and resilient rather than being shoe-horned in to traditional services. In turn this will support carers.

The concept of the Local Authority managed budgets will build upon providers being commissioned for geographical patches, broadly consistent with the boundaries for the new Community Resource Teams. The positive consequence of this is that it is hoped those providers will start to become an integral part of the health and social care teams in those patches, supporting the delivery of seamless health and social care.

Unintended negative consequences identified:

Mitigating actions:

A more equal Denbighshire

Overall Impact	Positive
Justification for impact	Choice and control for anyone eligible for a Support Budget is the main aim of this policy

Positive consequences identified:

The ethos is about improving the well-being of local communities. Most people who are eligible for a managed care and support plan are older or disabled. Enabling choice for people with protected characteristics e.g. because of race religion or beliefs through the availability of support budgets rather than traditional care is a positive move

The opportunity for individuals to be employed on a flexible basis may help to reduce some health inequalities

The opportunity for individuals to be employed on a flexible basis may help tackle poverty

Unintended negative consequences identified:

Mitigating actions:

Positive promotion

A Denbighshire of cohesive communities

Overall Impact	Positive
Justification for impact	The SSWB(Wales)Act consider this a positive way forward to support and develop cohesive communities

Positive consequences identified:

Enabling people to have choice over their care and support should mean that they are prepared to accept help from social services when it is needed rather than be fearful of the usual traditional services. It may also encourage a culture of positive risk taking

Part of the process of being allocated a Support Budget means that social care staff and others have considered all community resources first

Unintended negative consequences identified:

Providing money to individuals who employ their own personal assistants is harder to 'police' from a safeguarding perspective.

Mitigating actions:

Information about safeguarding should be provided to individual recipients.

A Denbighshire of vibrant culture and thriving Welsh language

Overall Impact	Positive
Justification for impact	Choice voice and control is the ethos of Support Budgets and this includes speaking in the language of choice

Positive consequences identified:

The opportunity for a SB recipient to purchase a personal assistant from their own welsh speaking community
There are opportunities to explore which could promote the Welsh Language however we have not done this yet

Unintended negative consequences identified:

Mitigating actions:

It may be possible to have a Welsh speaking brokerage service - needs exploring. It may be possible for Welsh speaking recipients to pool their resources to develop local welsh speaking services/pool of personal assistants.

A globally responsible Denbighshire

Overall Impact	Negative
Justification for impact	Commissioning of care and support and the shape of the future market is less controlled by the Council and regulating bodies.

Positive consequences identified:

Independent Sector Care providers may choose to diversify to e.g. brokerage. The opportunity to work more independently with service users to achieve wellbeing outcomes may facilitate more job satisfaction and support recruitment.

Unintended negative consequences identified:

The responsibilities of service users who are employers may not be taken seriously leading to poor working conditions/health and safety etc.
There may be an impact on Independent Sector providers if everyone chooses to employ personal

assistants but we believe this is unlikely

Mitigating actions:

We need to work closely with care providers to afford them the opportunities they need to diversify and also be responsive to outcome-based commissioning.